



台灣盛隆建材股份有限公司

Taiwan Shenglong Architecture Material Co., Ltd

www.shenglong.com.tw



SL-100

水泥砂漿防水劑



水泥砂漿防水材

『產品簡介』

水泥砂漿是由細砂、水泥及水等材料混合而形成的非均質脆性材料，由於水泥砂漿的施工技術及水泥硬化過程的反應，硬化成型的水泥砂漿中存在著許多微孔隙和微裂縫，正是由於這些初始缺陷的存在才使水泥砂漿呈現出一些非均質的特性，上述的微裂縫…等缺陷使得砂漿體本身具有高吸水率，在受到荷載、地震、雨水、紫外線、日夜溫差…等，砂漿體面就會不斷的產生劣化與風化的現象，進而造成砂漿體剝離與不正常龜裂現象並影響結構體，使其加速老化。影響建築物的外觀、使用壽命，將會威脅到人們的身體健康，水泥砂漿在整體營造上，大多作為降低結構體保護層的吸水率，防止防水粉刷龜裂，只是要採取有效的措施將其危害程度控制在一定的範圍之內。

Cement mortar is the non-homogenous brittleness material mixed by fine sand, cement, water and so on. As to the construction skills and its hardening process reflection of cement mortar, there are a lot of tiny holes and cracks existing in hardening formed cement mortar. The above mentioned defects such as fine cracks make mortar bodies containing high water content. While load, earthquake, rain and water, ultraviolet rays, and temperature difference between day and night appear, these situations make mortar weakened and cause efflorescence, moreover, stripping of mortar body and abnormal chap will affect structure and accelerate its aging. It affects appearance of building and operating life, and also threatens people's health. Mostly, cement mortar using in construction is to reduce water absorbing rate of protection layer of structure body, prevent chap of waterproof painting. Adopting effective methods to control danger within a rational scope.

『產品特性』

SL-100水泥砂漿防水劑係丙烯酸水性共聚物，不含有毒之有機化合物，添加於水泥砂漿或預拌混凝土中，可有效的降低防止不正常之乾縮龜裂現象，且可增強砂漿的韌性，使其具有韌性，可防止及降低結構受到外在影響，除此外，SL-100水泥砂漿防水劑，具有充填多孔隙砂漿體內的毛細孔隙之功能，降低砂漿體之吸水率，增強砂漿體之密度，提高水泥砂漿本身之黏著性，避免防止新舊接合所產生空鼓或接著不良等情事。

SL-100 cement mortar waterproofing agent is a water-based acrylic copolymer, without toxic organic compounds. It can be added to cement mortar or ready-mixed concrete, which can effectively reduce and prevent abnormal shrinkage cracking and enhance the toughness of mortar. , make it tough, and can prevent and reduce the structure from external influence. In addition, SL-100 cement mortar waterproofing agent has the function of filling the capillary pores in the porous mortar body, reducing the water absorption rate of the mortar body and enhancing the mortar body. Density, improve the adhesiveness of the cement mortar itself, and avoid the hollowing or poor adhesion caused by the old and new joints.



『產品簡介』

常被廣泛運用於新建或修繕工程之建築結構表面修補整平及結構修補。

It is widely applied to architecture construction surface of new-build or repairing engineering or for waterproof using as auxiliary material.

- **防水粉刷** Waterproof Painting

地上外牆打底、明挖地下室外牆、地下室內牆、水溝、蓄水箱(池、槽)、筏基坑、停車坑、電梯坑…等防水粉刷打底。

Ground outside wall bottoming, waterproof painting and bottoming of shallow spread open-cut outside wall of basement, basement inside wall, gutter, souvenir, bridge tunnel, parking lot tunnel, elevator tunnel...etc.

- **結構軀體修補** Structure Repairing

牆面、頂版、地坪水泥面、混凝土剝離、脫落結構面修補整平、外露鋼筋、包泥補平。

steel bars, flattening Wall surface, topping slab, floor cement surface, concrete peeling off, repairing and flattening of structure surface which is peeling off, exposing work on cement covering parts.

- **防水素地整平** Waterproof ground flattening

防水施作面角偶抹倒角、凹洞補平、積水面墊、整平…等。

Corner chamfering on waterproof construction surface, concave flattening, water surface pad, flattening...etc.

- **防水保護層** Waterproof Protection Layer

壁癌、抗潮濕面、抗負水壓面保護層、防水層保護層。

wall cancer, damp proof surface, protective layer of anti negative water pressure, protective layer of waterproofing layer.

- **填縫** Cracks Filling

窗(門)框與結構之間隙縫填補、磁磚、石材…等接縫處防水填縫。

Cracks filling between window/door frame and its structure. Waterproof crack filling of tile and stone material.

- **混凝土的添加使用** Concrete Adding Use

在新建工程混凝土澆置時，添加於混凝土中可強化其混凝土物料的穩定性。

For concrete placing in new built construction, add it in concrete can reinforce the stability of concrete material and supplies.

- **功能性運用** Functional Application

SL-100水泥砂漿防水劑+10倍清水稀釋備用，以1份水泥：2~3份沙混合攪拌均勻，添加稀釋好的防水劑混合攪拌均勻成可使用的狀態，若需要吸水率較低的砂漿，以SL-100水泥砂漿防水劑+3~5倍清水稀釋即可，依現況調整。

Dilute SL-100 cement mortar waterproof agent with 10 times of water, 1 cement : 2~3 mortar, mix and stir well. Add diluted waterproof agent and mix and stir evenly to be ready situation. Concrete add 1 time of resin and 10 times of water as using water. If low water absorbing ration mortar is needed, SL-100 cement mortar waterproof agent can dilute with 3~5 times of time, and adjust the proportion depends on different situations.



『施工規範』 Construction Norms

材料使用拌合比例 Material use mixing proportion

防水粉刷、混凝土添加 Waterproof painting, concrete adding

SL-100水泥砂漿防水劑 SL-100 Cement Mortar Waterproof Agent	防水劑配比 Proportion		砂漿配比 Mortar ratio
包裝 Package	SL-100	清水 Water	防水劑:水泥:砂
20KG/桶 20kg/barrel	1	10	0.5~0.8:1:3

修補 Repairing

SL-100水泥砂漿防水劑 SL-100 Cement Mortar Waterproof Agent	防水劑配比 Proportion		砂漿配比 Mortar ratio
包裝 Package	SL-100	清水 Water	防水劑:水泥:砂
20KG/桶 20kg/barrel	1	5	0.5~0.8:1:2

壁癌、填縫 Efflorescence

SL-100水泥砂漿防水劑 SL-100 Cement Mortar Waterproof Agent	防水劑配比 Proportion		砂漿配比 Mortar ratio
包裝 Package	SL-100	清水 Water	防水劑:水泥:砂
20KG/桶 20kg/barrel	1	3	0.5~0.8:1:2

施工前整理 Construction Arrangement

1. 施工面附著物剔除，劣質、鬆脫物打除，粉化面磨除，油脂刮除、溶解。

Eliminate attached stuff on construction surface. Get rid of inferior and losing staff. Flatten pulverizing staff. Scrape oil and melt it.

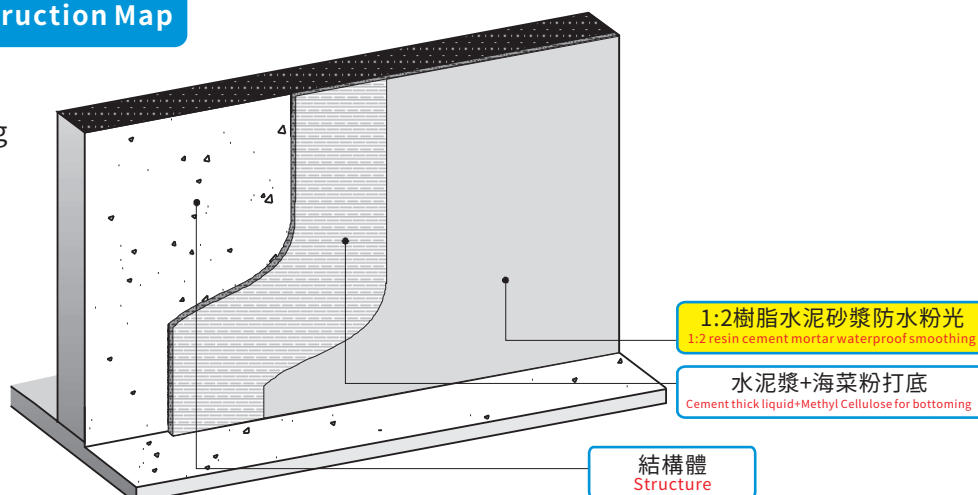
2. 使用請需將施工面清潔干淨，噴塗適量的樹脂水(SL-100:水=1:10)。將施工面毛細孔濕潤飽和。

Clean construction surface while needed. Adaptable resin water is acceptable. Wet construction pores.

施工圖說 Construction Map

1. 防水粉刷

Waterproof Painting

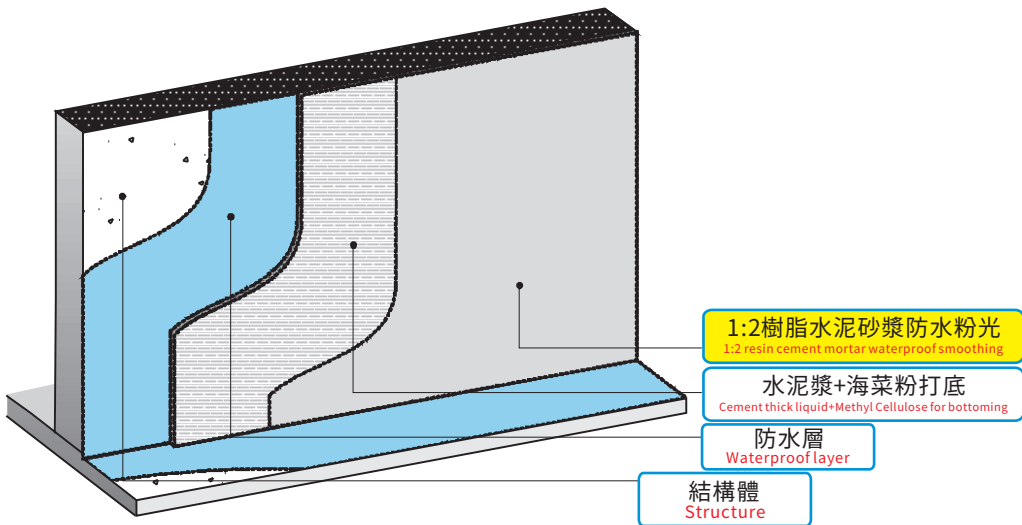
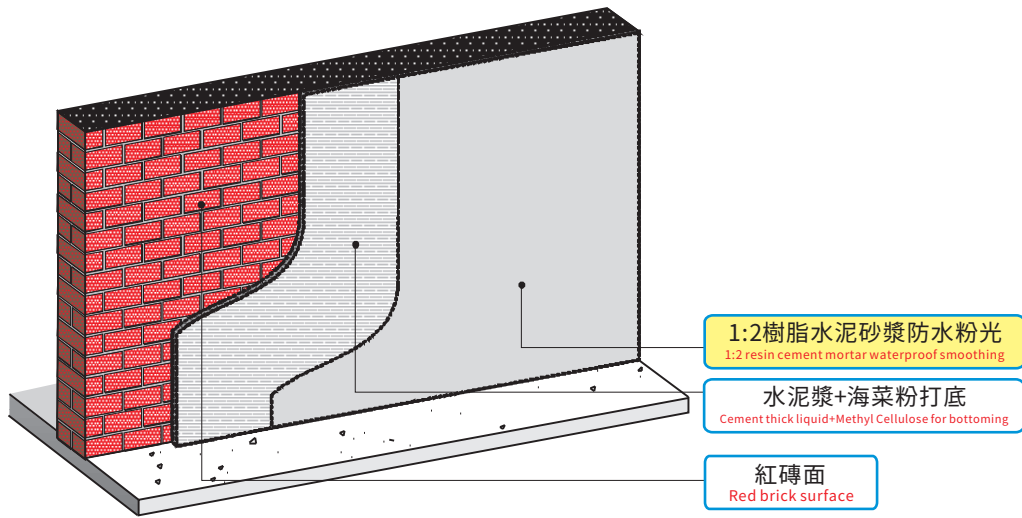


1:2樹脂水泥砂漿防水粉光
1:2 resin cement mortar waterproof smoothing

水泥漿+海菜粉打底
Cement thick liquid + Methyl Cellulose for bottoming

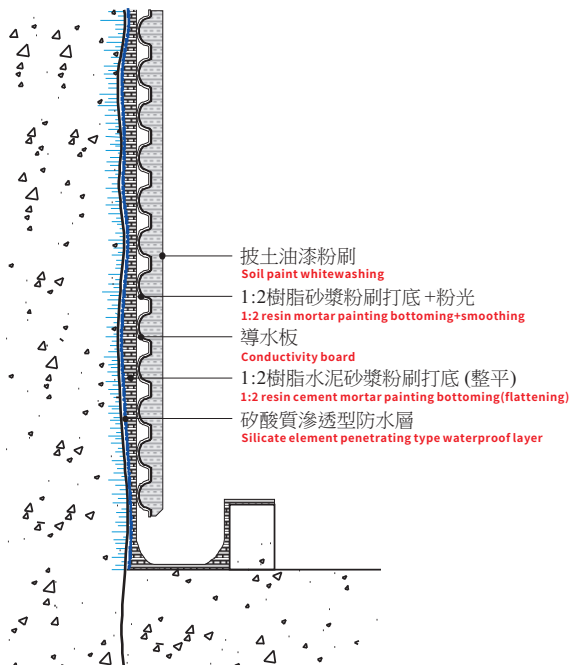
結構體
Structure



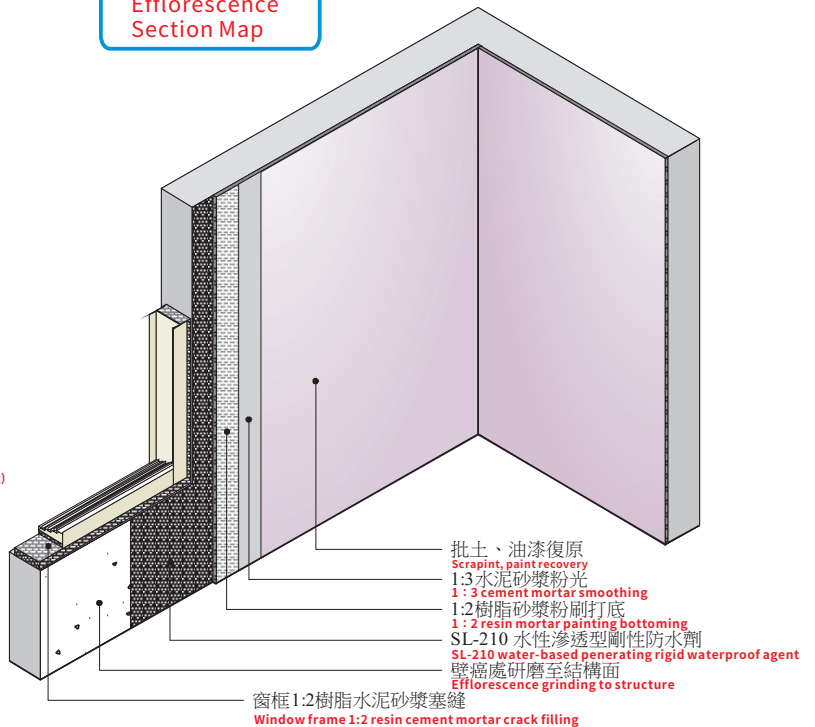


2. 壁癌、抗負水壓圖說 Efflorescence、negative water pressure resistance map

抗負水壓圖說
Negative Water Pressure Resistance Map

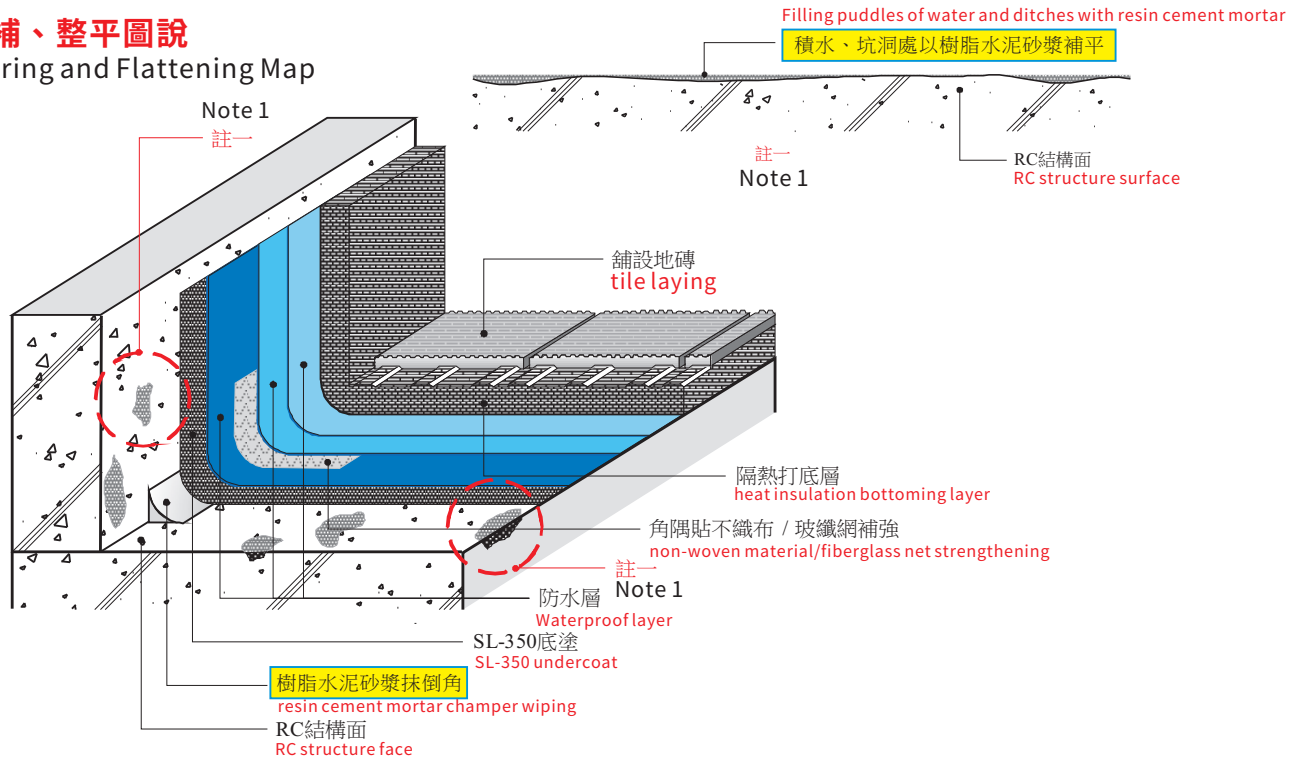


壁癌圖說
Efflorescence Section Map



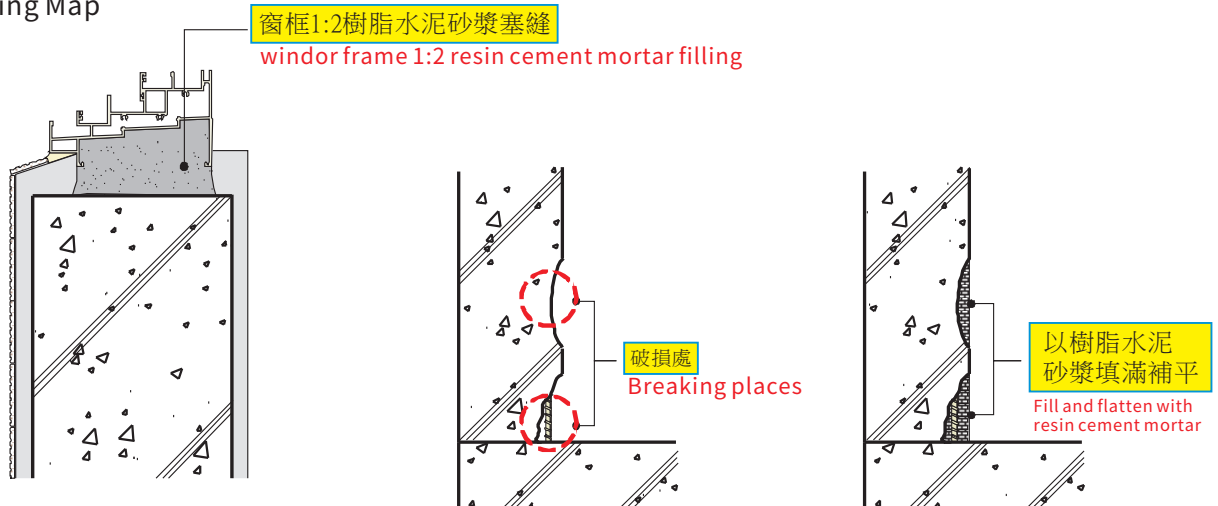
3. 修補、整平圖說

Repairing and Flattening Map



4. 填縫圖說

Cracks Filling Map



『填縫施作順序』 Cracks Filling Construction Process



劣化處打鑿清除表面粉塵
Chisel inferior places, clean dust on surface



表面防鏽及底塗施作
Surface antirusting and undercoating



表面修復填補
Repairing and filling on surface

- ※樹脂砂漿可使用時間:約1~2小時,若使用中膠化狀態,請再加適量的樹脂水攪拌。
- ※使用:請確實依照配比,先將樹脂倒入拌料桶內並與適當比例清水拌合,(再依比率倒入水泥砂漿粉體)攪拌均勻即可。

Resin mortar using available time : around 1~2 hours. If gelation happens while using, please add adeptable resin water and stir. Use: Please use according to proportion advise. Pour resin into material mixing barrel and add in adaptable proportion of water (get cement mortar powder in by proportion advise) and mix well.



『施工圖』 Construction illustration



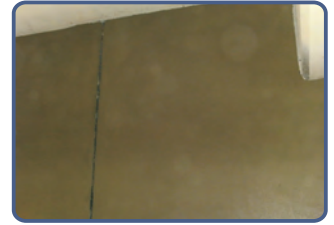
【原有壁癌面】
the original wall cancer



【先灌注止水】
stop leaking by injection first



【+1:2防水粉刷】
+1:2 waterproofing painting



【粉刷完成面】
painting finish surface



【導水版鋪設面】
drainage sheet laying finish



【表面粉刷施作】
surface painting construction



【批刀抹平處理】
trowel flattening treatment



【粉刷完成面】
painting finish surface

『施工注意事項』 Please pay Solidifying

材料使用注意事項 Material Using

- ▲ 如室內外氣溫在15°C以下，相對溼度85%以上避免施工。

Do not construct if temperature is below 15°C outdoor and indoor, relative humidity above 85%.

- ▲ 材料正常初凝時間為8小時，如施工時濕度過高或氣溫過低，請注意材料後續是否如預期之固結成形，如有因天候之影響無法如預期固結成形時，視情況採去後續補救措施。

Normal initial setting time is 8 hours. If humidity is too high or temperature too low in construction, please pay attention to following solidifying situation. If solidifying process is affected by some factors such as climate, repairing measures are needed depending on situations.

- ▲ 新澆置之混凝土或鋪抹之水泥砂漿層結構體儘量能有14~28天養生期，待養生期過後再行施作防水，較可讓防水之達到良好之品質。

14~28 days of maintenance period is better for new pouring concrete or wiping cement mortar layer structure. Waterproof construction after maintenance period will lead to a good quality.

- ▲ 施作之素地面儘量保持乾燥，如有積水等現象時請將施工面上的積水清除。

Try to keep construction ground dry. Clean puddle of water on construction surface.

- ▲ 施作之素地面上，如有油漬或可能導致接著不良之化學物質時，請先將其清除後，在污染處從新施作底塗覆蓋汙染面。

Clean inferior chemical staff like oil sludge which may induce bad attachment on construction ground. After cleaning, re-construct bottoming on polluted place to cover it.

- ▲ 請按照材料拌合之配比完全拌合後方可使用。

Please abiding by material mixing proportion advise.

- ▲ 底塗材之附着力決定後續材料之穩定度，施工請注意正確施作程序，而每一道程序施作都須在先前的材料初凝固化後，方可繼續施作。

The attachment of undercoat is decided by stability of following materials. Please notice correct construction process. Continue next construction step after making sure that the initial setting and solidifying are completed for previous step.



安全防護注意事項 Safety and Protection Remarks

- ▲ 施工前材料拌合之周邊需做好防護及保護措施，鋪設防護板及帆布等避免污染。拌料時需被放置一空桶承裝滿清水作為人員清洗之用。另一空桶則為清洗攪拌器具及清洗施作工具之用。

Protection measures need to be ready around material mixing place. Wiping protection board and canvas to avoid pollution. Put a barrel with water for washing while mixing material. The other empty barrel is needed for washing stirring and construction staff.

- ▲ 施工中人員儘量穿帶配置適當防護器具，避免材料進入口舌及侵入眼睛內，如有材料附著於皮膚或眼睛時請先以大量之清水清洗，再行就醫。避免以肥皂水或其他化學藥劑物質清洗傷口處。

Adaptable protection cloth for construction staff is needed to avoid material invading to mouth or eyes. If material attaches on skin or eyes, please use plenty of water to wash, and then go to hospital. Do not use soap water or other chemical agents to wash wounds.

- ▲ 塗料容器等避免隨便棄置。

Avoid throwing away coating containers without concern.

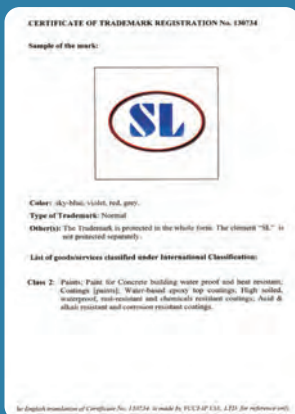
『包裝方式』

20kg/桶(5加侖圓桶裝) 20KG/barrel (5 gallons in round barrel)

Note: 本說明書的內容是建立在於真實準確的數據與理念上，供材料使用者參考，由於無法改變控制施作時天候所造成之材料質變等各種不確定因素，所以我們無法負責保證現場施作所得之結果。請詳閱我方所提供之產品說明，我方銷貨條件及有關聲明和建議，都不可用來違反法律規則或侵犯第三者利益。

The content of this manual is created on real and precise statistics and principles as a reference for material users. As some factors can not be made sure such as material qualitative change by different climates, we are not responsible for the result because of different construction conditions. Please read our product instructions, selling conditions and related statements and suggestions, which are not used to violate law rules or to invade the right and advantage of third party.





專業 · 品質 · 創新 · 服務

台灣盛隆 關係企業

台灣總公司(工程部)

台北市信義區基隆路二段115號11樓
TEL:(02)8732-7555
FAX:(02)8732-6677
EM:SL@shenglong.com.tw
www.shenglong.com.tw

上海分公司

上海松江區新橋鎮榮樂東路28號10號樓5樓
TEL:86-21-5186-0079
FAX:86-21-6806-0355
EM:shengchong@shengchong.cc
www.shenglong.cc

台灣三峽廠(建材部)

辦事處: 新北市三峽區大同路286巷26號之1
工廠: 新北市三峽區紫新路30號
TEL:(02)2668-1234
FAX:(02)8672-6426
EM:sheng.long8@shenglong.com.tw
www.shenglong.com.tw

廣州分公司

廣州市天河區廣州大道北路649號之十A23舖
TEL:86-02-8876-5876 / 86-20-8764-5870
BP:137-2809-1795

北京直營店

北京市豐台區南苑路臨106號(和義五金機電城G區13號)
BP:186 0072 2357

惠州直營店

廣東省惠州市河南岸馬庄金湖路134號
BP:159 1942 1928

成都直營店

成都市金牛區九里堤中路41號
BP:159 8282 2171 / 159 0236 5225

合肥直營店

合肥市瑤海區福海新居D樓114室
BP:136 7551 6543

青島直營店

山東省青島市李滄區書院路226號
BP:186 5321 9395

福州直營店

福州市晉安區珠寶路69號
BP:186 5321 9395

